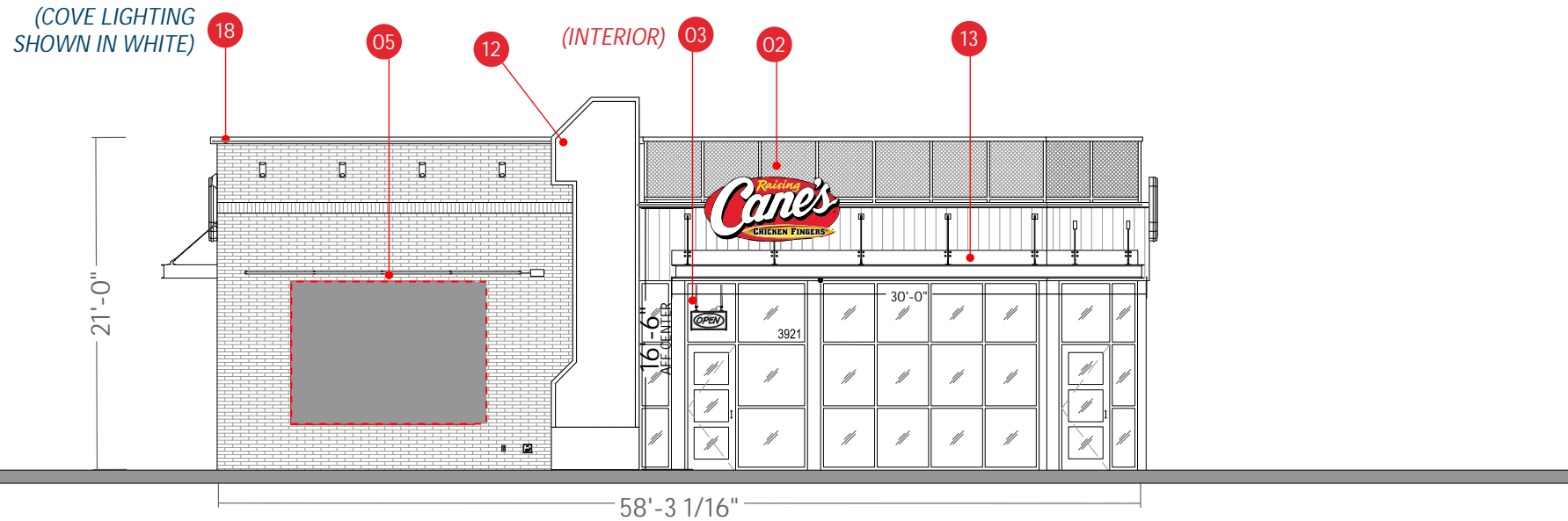




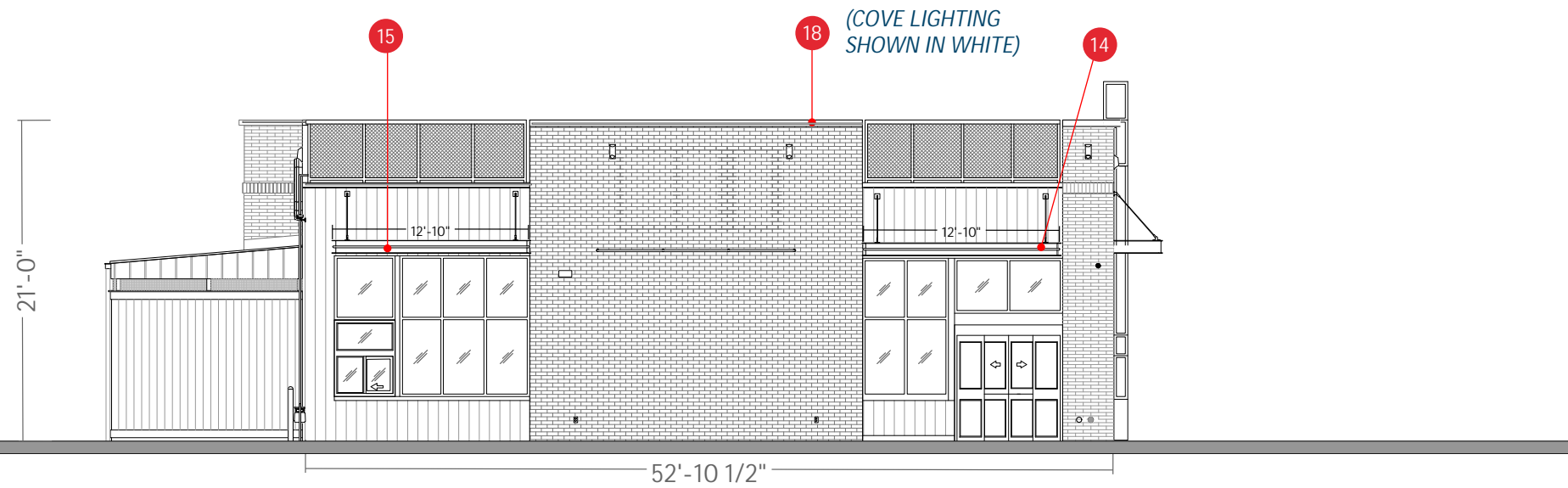
Site Name: RC1412 Fairlawn
Site ID: RC1412
Street Address: 3921 Medina Rd.
City, State Zipcode: Fairlawn, OH 44333
Date: 08-18-2025
Revision Number: R-00

BRAND RECOMMENDATION BOOK

ELEVATIONS



FRONT SOUTH ELEVATION



DRIVE THRU WEST ELEVATION

SITE KEY

PART #	DESCRIPTION
01	RAI-M-16-4 Custom 16 SF Monument @ 4' OAH
02	RAI-WS-8FT 4'x8' Wall Sign
03	RAI-NEON-OPEN 1'-2"x2'-3" "Open" Window Sign
04	RAI-WN-CF-NEON-OG 1'-6"x2' Chicken Fingers Window Sign (OG)
05	RAI-PMRL-CUST-TBD Custom Art Mural - Design TBD
06	RAI-OL-CM-16 One Love Channel Letters
07	RAI-RC-DTMB Standard DT Menu Board
08	RAI-RC-DTMB Standard DT Menu Board
09	RAI-DTSP Drive-Thru Speaker Post
10	RAI-DTSP Drive-Thru Speaker Post
11	RAI-DTPS Pre-Sell Board
12	RAI-OT One Tower
13	RAI-CAN01 Canopy 10"x4'-0"x30'-0"
14	RAI-CAN01 Canopy 10"x3'-6"x12'-10"
15	RAI-CAN01 Canopy 10"x3'-6"x12'-10"
16	RAI-CAN01 Canopy 10"x3'-6"x5'-4"
17	RAI-RC-LS-P6 P6 Lemonade Sign
18	RAI-COV01 Cove Lighting

Scale: 3/32"=1'

ARTISTIC REPRESENTATION ONLY.

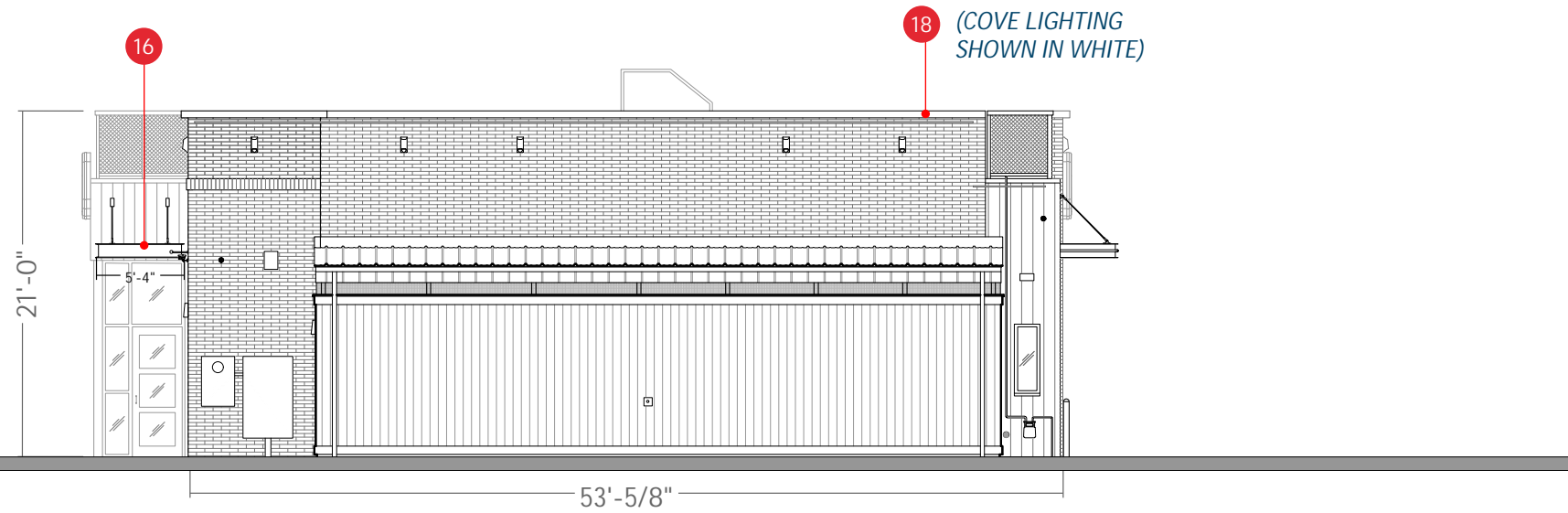
PAGE



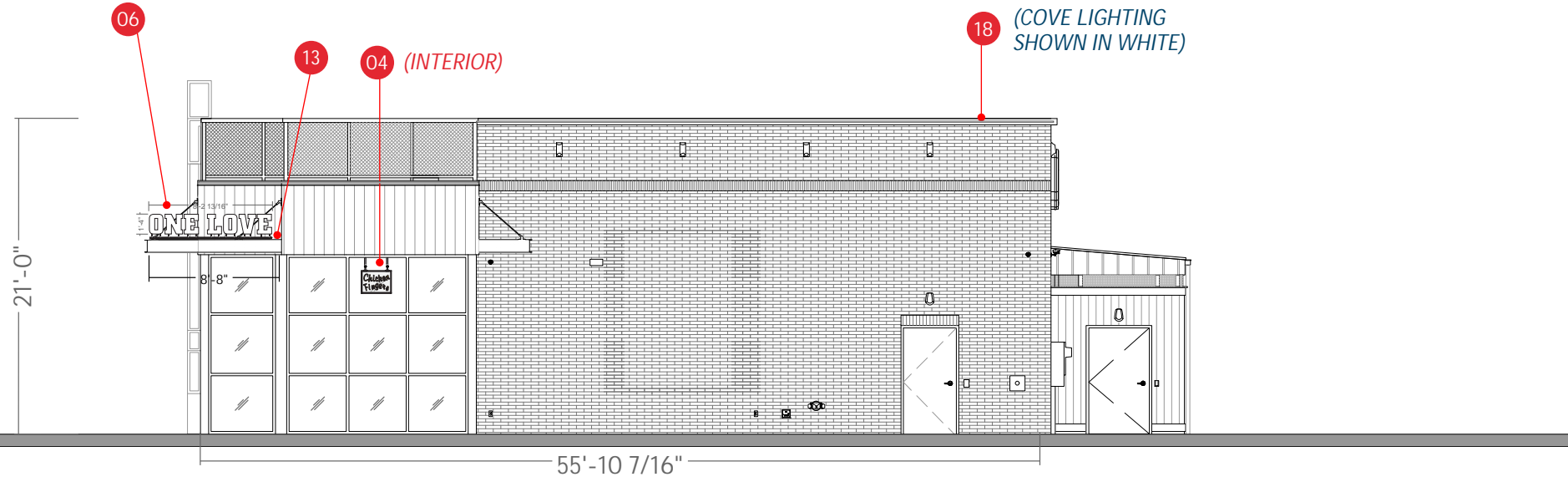
This document is the sole property of AGI, and all design, manufacturing, reproduction, use and sale rights regarding the same are expressly forbidden. It is submitted under a confidential relationship, for a special purpose, and the recipient, by accepting this document assumes custody and agrees that this document will not be copied or reproduced in whole or in part, nor its contents revealed in any manner or to any person except for the purpose for which it was tendered, nor any special features peculiar to this design be incorporated in other projects.



ELEVATIONS



REAR NORTH ELEVATION



SIDE ENTRY EAST ELEVATION

SITE KEY	
PART #	DESCRIPTION
01	RAI-M-16-4 Custom 16 SF Monument @ 4' OAH
02	RAI-WS-8FT 4'x8' Wall Sign
03	RAI-NEON-OPEN 1'-2"x2'-3" "Open" Window Sign
04	RAI-WN-CF-NEON-OG 1'-6"x2' Chicken Fingers Window Sign (OG)
05	RAI-PMRL-CUST-TBD Custom Art Mural - Design TBD
06	RAI-OL-CM-16 One Love Channel Letters
07	RAI-RC-DTMB Standard DT Menu Board
08	RAI-RC-DTMB Standard DT Menu Board
09	RAI-DTSP Drive-Thru Speaker Post
10	RAI-DTSP Drive-Thru Speaker Post
11	RAI-DTPS Pre-Sell Board
12	RAI-OT One Tower
13	RAI-CAN01 Canopy 10"x4'-0"x30'-0"
14	RAI-CAN01 Canopy 10"x3'-6"x12'-10"
15	RAI-CAN01 Canopy 10"x3'-6"x12'-10"
16	RAI-CAN01 Canopy 10"x3'-6"x5'-4"
17	RAI-RC-LS-P6 P6 Lemonade Sign
18	RAI-COV01 Cove Lighting

Scale: 3/32"=1'

ARTISTIC REPRESENTATION ONLY.

PAGE



This document is the sole property of AGI, and all design, manufacturing, reproduction, use and sale rights regarding the same are expressly forbidden. It is submitted under a confidential relationship, for a special purpose, and the recipient, by accepting this document assumes custody and agrees that this document will not be copied or reproduced in whole or in part, nor its contents revealed in any manner or to any person except for the purpose for which it was tendered, nor any special features peculiar to this design be incorporated in other projects.



SEE AGI MANUFACTURING DRAWINGS FOR SITE SPECIFIC DETAILS

DESCRIPTION

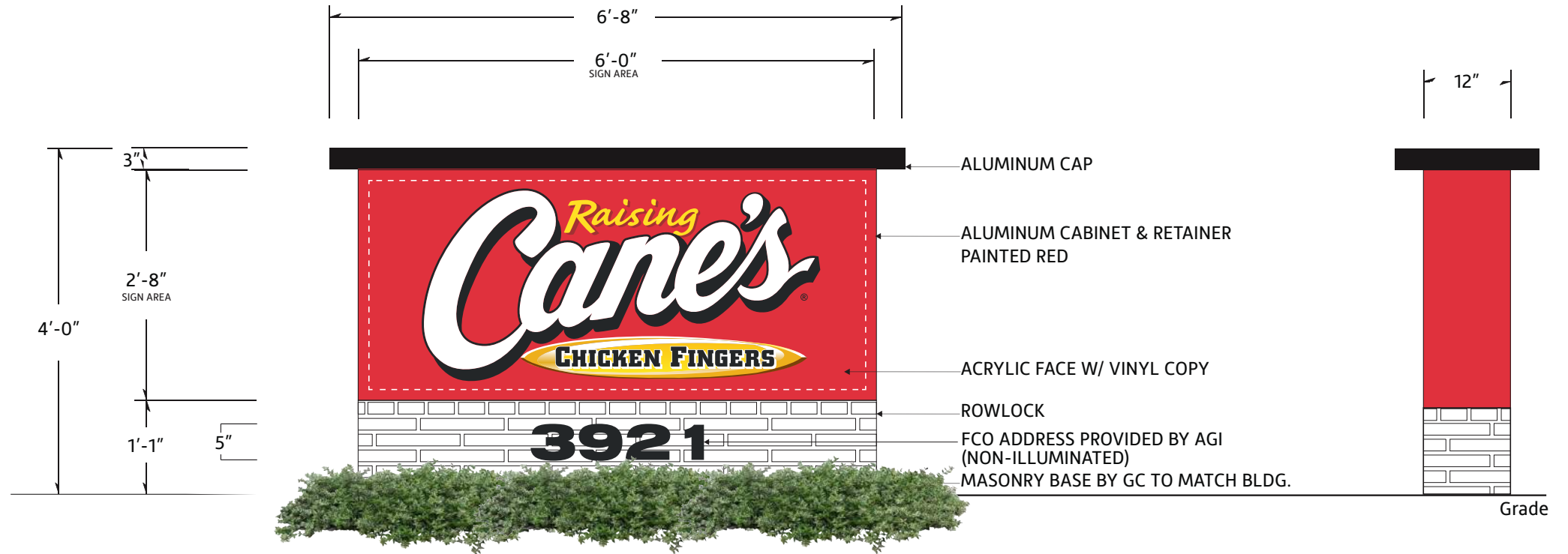
Custom 16 SF Monument @ 4' OAH

SPECIFICATIONS

- SIGN H: 2'-8"
- SIGN W: 6'-0"
- OAH: 4'-0"
- OAW: 6'-8"
- SIGN SF: 16.02
- TOTAL SF:
- ILLUMINATION: Internal
- AMPS:

SITE SPECIFIC NOTES

VARIANCE REQUIRED FOR STANDALONE GROUND SIGN. Sign design is conceptual pending Cane's Design and property owner approvals, final engineering and permitting in accordance with local jurisdiction. Foundation and concrete pad scope to be determined.



FOUNDATION AND CONCRETE PAD SCOPE TO BE DETERMINED

COLOR SCHEDULE	
PAINT COLORS	VINYL COLORS
MAP / 27386	3M / OPAQUE / #7725-10 / 'WHITE'
PANTONE / #109C / 'YELLOW'	3M / OPAQUE / #680-10 / 'WHITE' / REFLECTIVE
MAP / 2075	3M / TRANS. / #3630-015 / 'YELLOW'
MAP / 'BLACK'	3M / TRANS. / #3630-53 / 'CARDINAL RED'
MAP / 'BLACK' / FINISH MATTE	3M / TRANS. / #3630-73 / 'RED'
MAP / 'BLACK' / FINISH SATIN	3M / OPAQUE / 'BLACK'



02 RAI-WS-8FT

4'x8' Wall Sign

SEE AGI MANUFACTURING DRAWINGS FOR SITE SPECIFIC DETAILS

DESCRIPTION

**Internally Illuminated Single-Face Wall Sign
With Thermoformed Polycarbonate Face With
Applied Vinyl Graphics**

SPECIFICATIONS

SIGN H: 3'-10 1/8"
SIGN W: 8'-0"
OAH:
OAW:
SIGN SF: 25.47
TOTAL SF:
ILLUMINATION: Internal
AMPS: 1.8 @ 120 Volts Connected Load

SITE SPECIFIC NOTES



PART NUMBER	'H'	'W'	'AREA'
RAI-WS001-0204-T	2' - 0 11/16"	4' - 3 3/8"	8.83
RAI-WS001-0205-T	2' - 7 3/4"	5' - 6"	14.55
RAI-WS001-0306-T	2' - 10 5/8"	6' - 0"	17.31
RAI-WS001-0408-T	3' - 10 1/8"	8' - 0"	25.47
RAI-WS001-0510-T	4' - 9 11/16"	10' - 0"	50

COLOR SCHEDULE	
PAINT COLORS	VINYL COLORS
MAP / 27386	3M / OPAQUE / #7725-10 / 'WHITE'
PANTONE / #109C / 'YELLOW'	3M/ OPAQUE / #680-10 / 'WHITE' / REFLECTIVE
MAP / 2075	3M / TRANS. / #3630-015 / 'YELLOW'
MAP / 'BLACK'	3M / TRANS. / #3630-53 / 'CARDINAL RED'
MAP/ 'BLACK' / FINISH MATTE	3M / TRANS. / #3630-73 / 'RED'
MAP/ 'BLACK' / FINISH SATIN	3M / OPAQUE / 'BLACK'



03 RAI-NEON-OPEN

1'-2"x2'-3" "Open" Window Sign

SEE AGI MANUFACTURING DRAWINGS FOR SITE SPECIFIC DETAILS

DESCRIPTION

1'-2" x 2'-3" OPEN Neon Single-Face Suspended Window Sign, with Polycarbonate Case

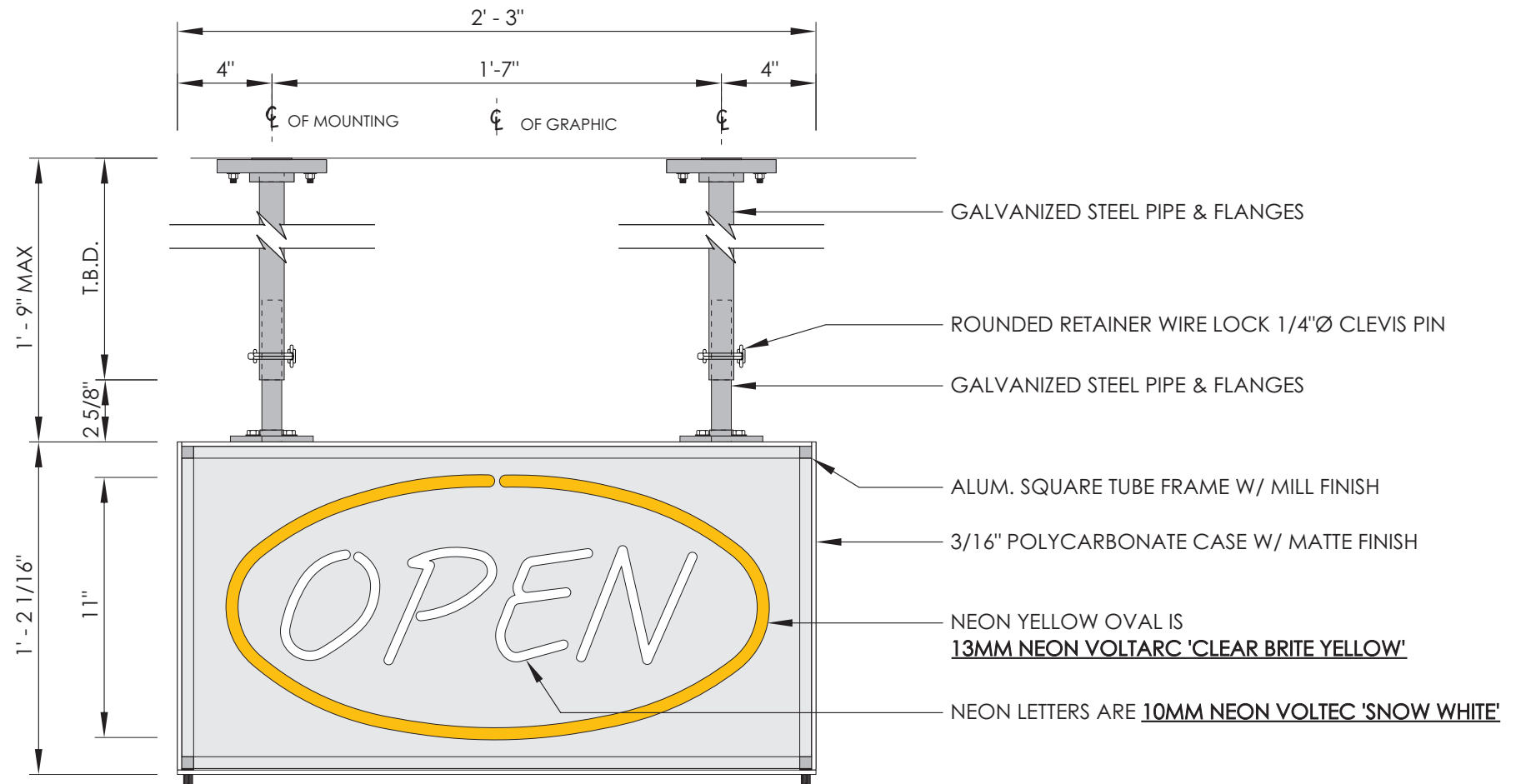
Window Sign- less than 20%

SPECIFICATIONS

SIGN H: 1'-2 1/16"
 SIGN W: 2'-3"
 OAH: TBD
 OAW: 2'-3"
 SIGN SF: 2.6 SF
 TOTAL SF:
 ILLUMINATION: Neon
 AMPS: 2.1 @ 120 Volts Connected Load

SITE SPECIFIC NOTES

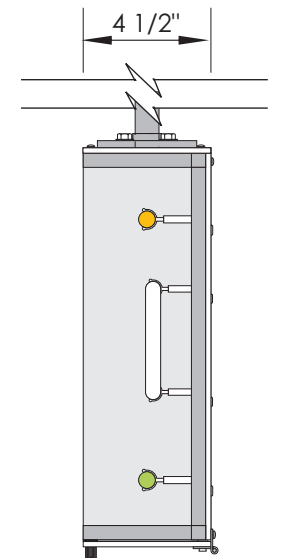
*****Pipe lengths to be verified prior to install*****



FRONT VIEW

RC SUSPENDED WINDOW SIGNS									
Part Number	H	W	OAW	OAH	D	C	E	SF	AMPS
RAI-WN-SUS-OPEN-NEON-H	1'-2 1/16"	2'-3"	2'-3"	TBD	4 1/2"	1'-7"	4"	2.64	2.1
RAI-WN-SUS-OPEN-NEON-V	2'-9"	1'-2 1/8"	1'-2 1/8"	TBD	4 1/2"	10"	2 1/16"	3.24	2.1
RAI-WN-SUS-CF-NEON-OG	1'-6"	2'-0"	2'-0"	TBD	4 1/2"	1'-5 1/2"	3 1/4"	3	2.1
RAI-WN-SUS-CF-NEON-OG-LG	3'-0"	4'-0"	4'-0"	TBD	4 1/2"	1'-5 1/2"	3 1/4"	12	2.1
RAI-WN-SUS-CF-NEON-H	1'-2 1/16"	4'-4"	4'-4"	TBD	4 1/2"	3'-4"	6"	5.08	2.1
RAI-WN-SUS-ORDER-NEON-H	1'-2 1/16"	2'-3"	2'-3"	TBD	4 1/2"	1'-7"	4"	2.64	2.1
RAI-WN-SUS-WALKUP-NEON-H	1'-2 1/16"	2'-3"	2'-3"	TBD	4 1/2"	1'-7"	4"	2.64	2.1
RAI-WN-SUS-PICKUP-NEON-H	1'-2 1/16"	2'-3"	2'-3"	TBD	4 1/2"	1'-7"	4"	2.64	2.1
RAI-WN-SUS-WALKUP-NEON-V	3'-1 3/8"	1'-2 1/8"	1'-2 1/8"	TBD	4 1/2"	10"	2 1/16"	3.67	2.1
RAI-WN-SUS-OPEN-SILICONE-H	1'-2 1/16"	2'-3"	2'-3"	TBD	4 1/2"	1'-7"	4"	2.64	2.1
RAI-WN-SWM-OPEN-SILICONE-H	1'-2 1/16"	2'-3"	2'-3"	1'-8 1/16"	3"	1'-7"	4"	2.64	2.1
RAI-WN-CF-SILICONE-OG-DF	1'-11"	2'-6"	2'-6"	TBD	7"	1'-10"	4"	4.8	2.1
RAI-WN-SWM-CF-SILICONE-OG-DF	8"	2'-3"	2'-3"	1'-2"	7"	1'-7"	4"	2.63	2.1
RAI-WN-SUS-PICKUP-ARROW-NEON	5'-2 1/2"	2'-8 3/8"	2'-8 3/8"	TBD	4 7/16"	XX	XX	14.05	2.1
RAI-WN-SUS-OL-HEART-ILL	4'-6 3/4"	5'-0"	5'-0"	10'-5 7/16"	XX	3'-1 1/4"	11 3/8"	22.81	1.8

COLOR SCHEDULE	
PAINT COLORS	VINYL COLORS
MAP / 27386	3M / OPAQUE / #7725-10 / 'WHITE'
PANTONE / #109C / 'YELLOW'	3M / OPAQUE / #680-10 / 'WHITE' / REFLECTIVE
MAP / 2075	3M / TRANS. / #3630-015 / 'YELLOW'
MAP / 'BLACK'	3M / TRANS. / #3630-53 / 'CARDINAL RED'
MAP / 'BLACK' / FINISH MATTE	3M / TRANS. / #3630-73 / 'RED'
MAP / 'BLACK' / FINISH SATIN	3M / OPAQUE / 'BLACK'



SIDE VIEW



04 RAI-WN-CF-NEON-OG

1'-6"x2' Chicken Fingers Window Sign (OG)

SEE AGI MANUFACTURING DRAWINGS FOR SITE SPECIFIC DETAILS

DESCRIPTION

1'-6" x 2'-0" Chicken Fingers Neon Single-Face Suspended Window Sign, with Polycarbonate Case

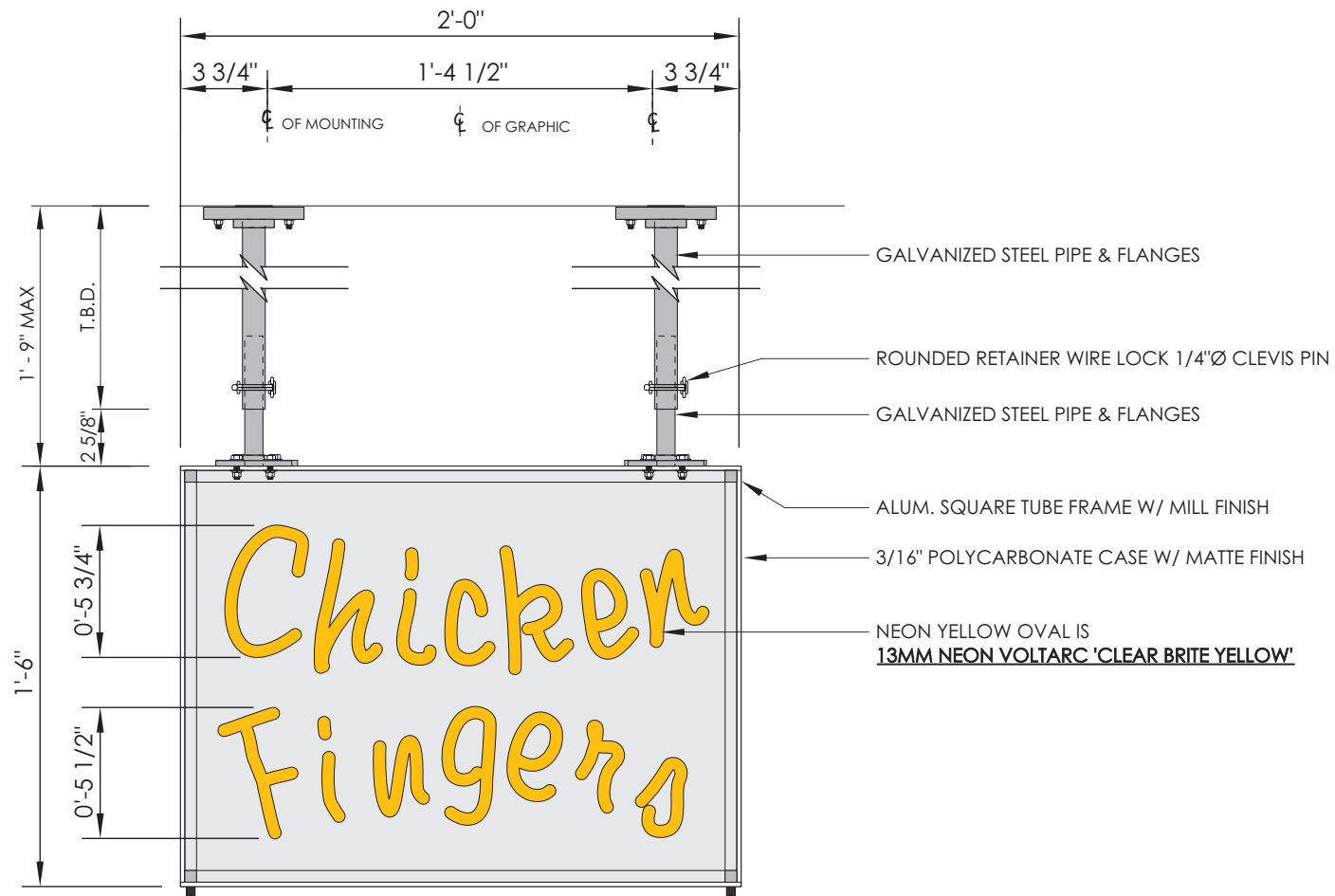
Window Sign- less than 20%

SPECIFICATIONS

SIGN H: 1'-6"
 SIGN W: 2'-0"
 OAH: TBD
 OAW: 2'-0"
 SIGN SF: 4
 TOTAL SF:
 ILLUMINATION: Neon
 AMPS: 2.1

SITE SPECIFIC NOTES

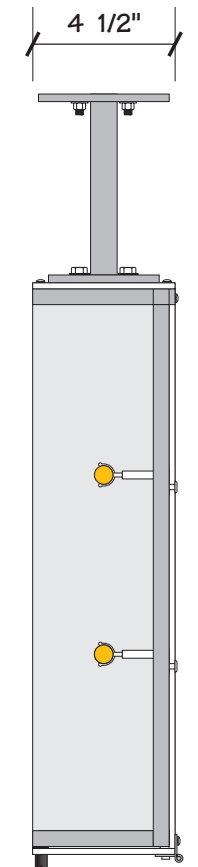
****Pipe lengths to be verified prior to install****



FRONT VIEW

RC SUSPENDED SIGNS									
Part Number	H	W	OAW	OAH	D	C	E	OVAL SF	AMPS
RAI-WN-SUS-OPEN-NEON-H	1'-2 1/16"	2'-3"	2'-3"	TBD	4 1/2"	1'-7"	4"	2.64	2.1
RAI-WN-SUS-ORDER-NEON-H	1'-2 1/16"	2'-3"	2'-3"	TBD	4 1/2"	1'-7"	4"	2.64	2.1
RAI-WN-SUS-WALKUP-NEON-H	1'-2 1/16"	2'-3"	2'-3"	TBD	4 1/2"	1'-7"	4"	2.64	2.1
RAI-WN-SUS-PICKUP-NEON-H	1'-2 1/16"	2'-3"	2'-3"	TBD	4 1/2"	1'-7"	4"	2.64	2.1
RAI-WN-SUS-WALKUP-NEON-V	3'-1 3/8"	1'-2 1/8"	1'-2 1/8"	TBD	4 1/2"	10"	2 1/16"	3.67	2.1
RAI-WN-SUS-OPEN-NEON-V	2'-9"	1'-2 1/8"	1'-2 1/8"	TBD	4 1/2"	10"	2 1/16"	3.24	2.1
RAI-WN-SUS-CF-NEON-H	1'-2 1/16"	4'-4"	4'-4"	TBD	4 1/2"	3'-4"	6"	5.08	2.1
RAI-WN-SUS-OPEN-SILICONE-H	1'-2 1/16"	2'-3"	2'-3"	TBD	4 1/2"	1'-7"	4"	2.64	2.1
RAI-WN-SWM-OPEN-SILICONE-H	1'-2 1/16"	2'-3"	2'-3"	1'-8 1/16"	3"	1'-7"	4"	2.64	2.1
RAI-WN-CF-NEON-OG	1'-6"	2'-0"	2'-0"	2'-0"	4 1/2"	1'-5 1/2"	3 1/4"	4	2.1
RAI-WN-CF-SILICONE-OG-DF	1'-11"	2'-6"	2'-6"	TBD	7"	1'-10"	4"	4.8	2.1
RAI-WN-SWM-CF-SILICONE-OG-DF	8"	2'-3"	2'-3"	1'-2"	7"	1'-7"	4"	2.63	2.1
RAI-WN-SUS-PICKUP-ARROW-NEON	5'-2 1/2"	2'-8 3/8"	2'-8 3/8"	TBD	4 7/16"	XX	XX	14.05	2.1
RAI-WN-SUS-OL-HEART-ILL	4'-6 3/4"	5'-0"	5'-0"	10'-5 7/16"	XX	3'-1 1/4"	11 3/8"	22.81	1.8

COLOR SCHEDULE	
PAINT COLORS	VINYL COLORS
MAP / 27386	3M / OPAQUE / #7725-10 / 'WHITE'
PANTONE / #109C / 'YELLOW'	3M/ OPAQUE / #680-10 / 'WHITE' / REFLECTIVE
MAP / 2075	3M / TRANS. / #3630-015 / 'YELLOW'
MAP / 'BLACK'	3M / TRANS. / #3630-53 / 'CARDINAL RED'
MAP / 'BLACK' / FINISH MATTE	3M / TRANS. / #3630-73 / 'RED'
MAP / 'BLACK' / FINISH SATIN	3M / OPAQUE / 'BLACK'



SIDE VIEW



One Love Channel Letters

SEE AGI MANUFACTURING DRAWINGS FOR SITE SPECIFIC DETAILS

DESCRIPTION

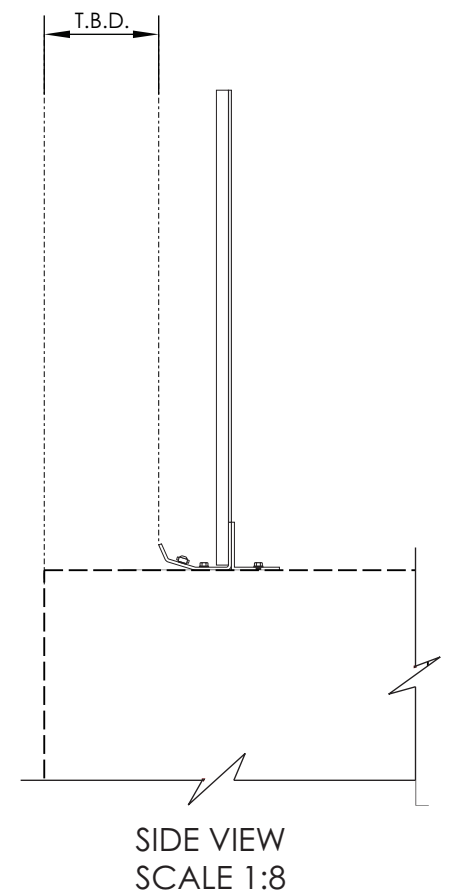
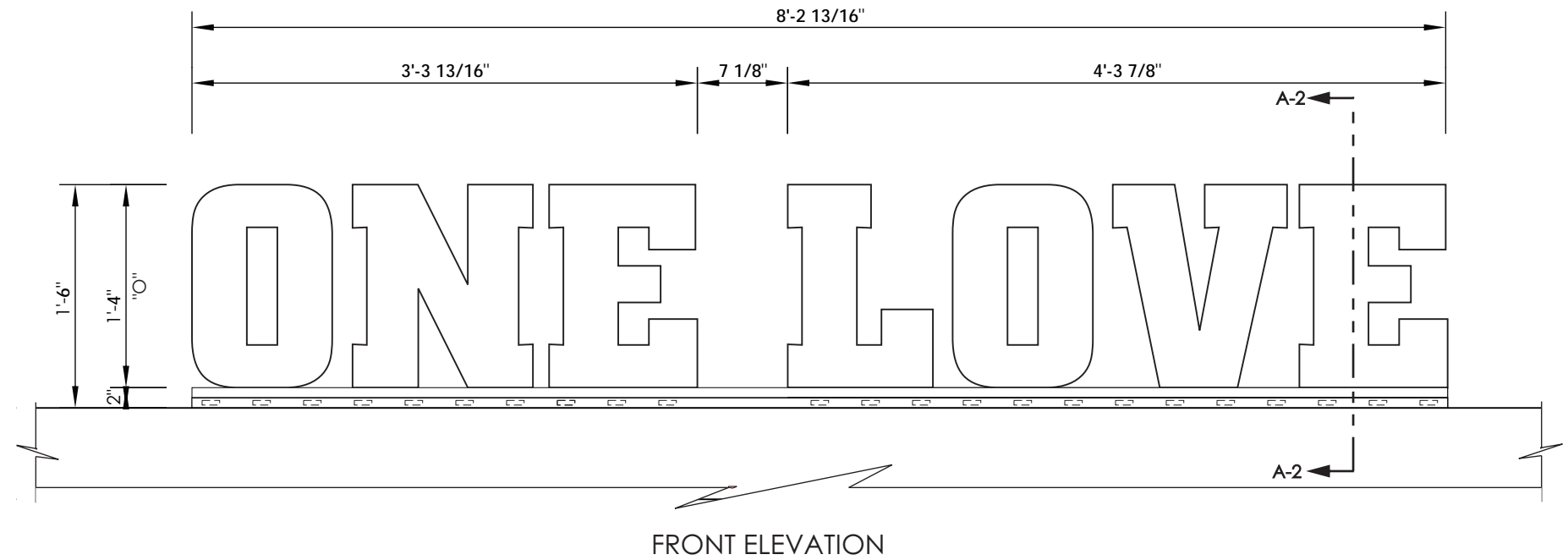
One Love (16" FCO Canopy Mounted). Externally Illuminated.

SPECIFICATIONS

SIGN H: 1'-4"
 SIGN W: 8'-2 13/16"
 OAH: 1'-6"
 OAW: 8'-2 13/16"
 SIGN SF: 11.22
 TOTAL SF:
 ILLUMINATION: External
 AMPS: 1.8 @ 120 Volts Connected Load

SITE SPECIFIC NOTES

Design is subject to change. Pending Raising Cane's Design approvals, engineering, and prototype viewing.



COLOR SCHEDULE	
PAINT COLORS	VINYL COLORS
MAP / 27386	3M / OPAQUE / #7725-10 / 'WHITE'
PANTONE / #109C / 'YELLOW'	3M / OPAQUE / #680-10 / 'WHITE' / REFLECTIVE
MAP / 2075	3M / TRANS. / #3630-015 / 'YELLOW'
MAP / 'BLACK'	3M / TRANS. / #3630-53 / 'CARDINAL RED'
MAP / 'BLACK' / FINISH MATTE	3M / TRANS. / #3630-73 / 'RED'
MAP / 'BLACK' / FINISH SATIN	3M / OPAQUE / 'BLACK'

SEE AGI MANUFACTURING DRAWINGS FOR SITE SPECIFIC DETAILS

DESCRIPTION

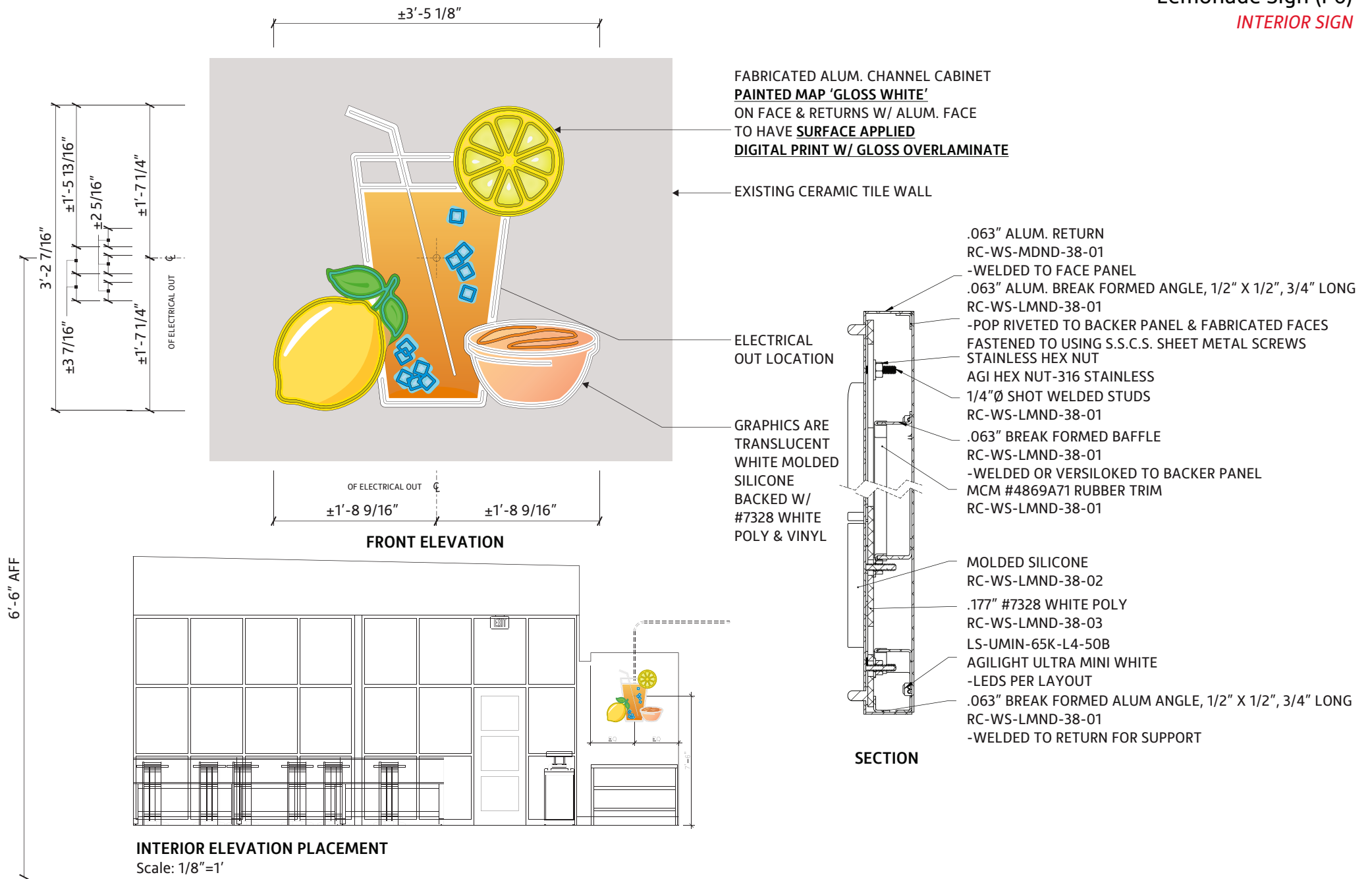
Internally Illuminated Silicone Display

Interior Sign - no permit required

SPECIFICATIONS

SIGN H: 3'-2 7/16"
SIGN W: 3'-5 1/8"
OAH:
OAW:
SIGN SF: 11.06
TOTAL SF:
ILLUMINATION: Internal
AMPS:

SITE SPECIFIC NOTES



COLOR SCHEDULE	
PAINT COLORS	VINYL COLORS
MAP / 27386	3M / OPAQUE / #7725-10 / 'WHITE'
PANTONE / #109C / 'YELLOW'	3M / OPAQUE / #680-10 / 'WHITE' / REFLECTIVE
MAP / 2075	3M / TRANS. / #3630-015 / 'YELLOW'
MAP / 'BLACK'	3M / TRANS. / #3630-53 / 'CARDINAL RED'
MAP / 'BLACK' / FINISH MATTE	3M / TRANS. / #3630-73 / 'RED'
MAP / 'BLACK' / FINISH SATIN	3M / OPAQUE / 'BLACK'

Contact Information:

2655 International Parkway
Virginia Beach, VA 23452
757.427.1900
Toll Free: 800.877.7868
www.AGI.net

*We look forward to
working with you!*





BATH TOWNSHIP ZONING

Summit County, Ohio

3864 West Bath Road - P.O. Box 1188 - Bath, Ohio - 44210-1188
Phone: 330.666.4007 - Fax: 330.666.0305
www.bathtownship.org

SIGN (PERMANENT) APPLICATION

For office use only:	Permit No.:	ARC File No.:	BZA File No.:
----------------------	-------------	---------------	---------------

Applicant Data

Name: Carly Detar

Company Name: OLIO Development Group

Address: 1062 Ridge Street, Columbus, OH 43215

Telephone No.: 614-813-4641 Email cdetar@oliodevgrp.com

Property Data

Zoning District: (circle one) R-1 R-2 R-3 R-4 B-1 **B-2** B-3 B-4 B-5

Site Address: 3921 Medina Road, Fairlawn, OH 44333

Owner(s): OICE LLC

Owner Address: 11995 El Camino Real, San Diego, CA 92130

Telephone No.: _____

Is this a corner lot? Yes No

Shopping Center or Multiple Occupancy Building Yes* No

*Plaza/Building Name: _____

Sign Data

All permanent sign applications will be reviewed by the Appearance Review Commission (ARC). The ARC reviews the proposed signage and recommends to the Zoning Inspector and Board of Zoning Appeals, if applicable, as to the:

1. General appearance of the sign and compatibility with the surrounding areas
2. Height & Size
3. Landscaping
4. Other contributing factors

Fill out the table below for each proposed sign with the following information:

1. Reason – new, replacement, alteration, location change, etc.
2. Type – wall, side wall, monument, or canopy
3. Overall sign dimensions – height x width x depth (in feet)
4. Sign area in square feet
5. Illumination – internal or external and candle power
6. Number of sides
7. Building face area in square feet

Sign No.	Reason	Type	Dimensions	Area	Illumination	Number of Sides	Building Face Area
1	New	Wall	3'-10 1/8" H 8'-0" W	25.47 sf	Internally Illuminated	1	1,218
2	New	Monument	2'-8' H 6'-0' W	16.02 sf	Internally Illuminated	2	
3	New	Wall	3'-10 1/8" H 8'-0" W	25.47 sf	Internally Illuminated	1	1,092
4	New	Wall	3'-10 1/8" H 8'-0" W	25.47 sf	Internally Illuminated	1	1,155
5							

Total area of wall signs: 76.41 sq ft

Percentage of wall area: 45%

Required Site Plan Data and Sign Detail Drawings

The following items must be submitted with the application in order to be reviewed. The application will be reviewed by the Zoning Inspector and the Appearance Review Commission. No applications will be reviewed at the time of submittal. ***Incomplete applications will delay the review process.*** Site inspections will be conducted at the discretion of the Zoning Inspector.

1. One (1) copy of the site plan showing the following:
 - A North arrow and scale
 - Existing structures and dimensions
 - Driveway and road access locations (existing and/or proposed)
 - Proposed sign location(s)
 - Sign area landscaping denoting type and quantity of material (if applicable)
 - All applicable setbacks
 - Roads
 - Lot dimensions
 - Indicate the location of lakes, ponds, wetlands, ravines, or other unusual topography
 - Riparian Corridor(s) must be clearly indicated on all lots containing applicable watercourses
 - All slopes greater than 18% must be indicated on a two (2) foot contour interval map with the contours extending at least 100 feet beyond the lot lines

2. One (1) copy of the sign drawings showing the major details listed below.
 - Overall size, drawn to scale
 - Sign area calculations, including building wall face area (if applicable)
 - Lighting (if applicable)
 - Landscaping (if applicable)
 - Construction materials
 - Mounting details including height of sign above grade
 - Detailed sign color elevations

3. Digital copy of all required documents (i.e. .pdf file)

Applicant Certification

By initialing, the applicant has read, understands, and agrees to the following:

CD 1. Right Of Revocation - It is understood and agreed by this applicant that any error, misstatement, misrepresentation of material fact, with or without intent, such as might and/or would cause a refusal of this application, or any material alteration in the accompanying plans made subsequent to the issuance of a Zoning Certificate without approval of the Zoning Inspector or Zoning Board of Appeals, shall constitute sufficient grounds for the revocation of such certificate.

CD 2. The applicant agrees to allow the Zoning Inspector access to the property for on-site inspection(s).

CD 3. There may be deed restrictions on the property that differ from the Bath Township Zoning Regulations. Please check your deed to make sure that any proposed project meets any restrictions that may be in effect.

CD 4. The zoning certificate shall become void at the expiration of one (1) year after date of issuance, unless the structure or alteration thereof is started, or within two (2) years after the date of issuance, unless the structure or alteration is completed.

Applicant Signature: Carly M. Detar Date: 07.15.2025

Fee (make check payable to Bath Township Trustees)

\$50.00 *for each sign*

For Office Use Only

Appearance Review Commission File No.: ARC - -

Board of Zoning Appeals File No.: BZA - -

- Approved
- Approved with Conditions*
- Denied

*If approved with conditions, attach copy of conditions to this application and Zoning Certificate.

Zoning Certificate File No.: ZP - -

- Approved
- Denied**

Zoning Inspector Signature: _____ Date: _____

** Reason for denial: _____

